

AiMu MCu: A New Chinese Intrauterine Device

Vincent Y.T. Cheung, MBBS, FRCOG, FRCSC

Department of Obstetrics and Gynaecology, North York General Hospital, University of Toronto, Toronto ON

A 40-year-old woman was referred for removal of an intrauterine device that had been inserted three years earlier in China. An AiMu MCu IUD (Figures 1 and 2) was retrieved using an IUD removal hook.

This newly designed AiMu MCu IUD is popular in China. “AiMu” is the name of the company that manufactures the device. “M” indicates “memory function,” emphasizing the elastic nature and the capability of the device to maintain the designed shape over long periods of time. It consists of a support made of titanium-nickel alloy, which has the advantages of elasticity, corrosion and fatigue resistance, and good tissue compatibility. The spring-like action in the middle of the support allows the device to conform to the shape of the uterine cavity, especially during uterine

contractions, thus reducing the risk of displacement and expulsion. The copper grains on each end of the support are located close to the tubal ostia, creating a zone with high copper density, and effectively stopping sperm entry and embryo implantation. Local studies indicated that, within the first 12 months after insertion, the expulsion rate was less than 0.5%, and both the pregnancy rate and the removal rate due to adverse symptoms were less than 1%. Long-term studies on this device are not available.

Consent to publish these images has been obtained from the patient.

J Obstet Gynaecol Can 2009;31(10):911

Figure 1. The AiMu MCu IUD

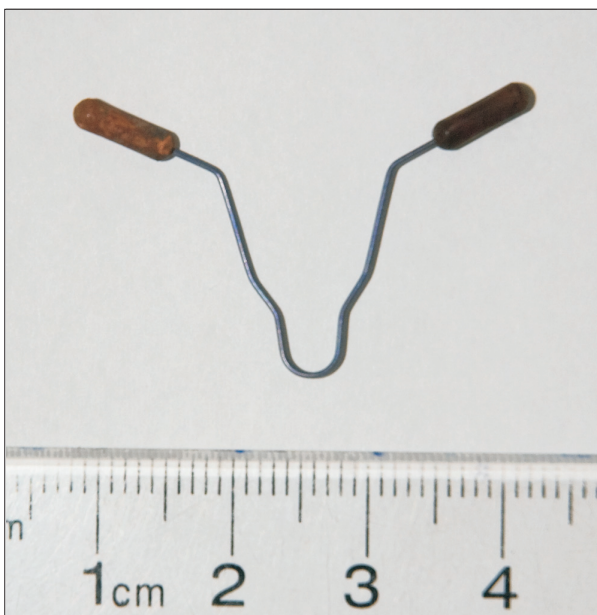


Figure 2. Sonographic appearance of the AiMu MCu IUD

